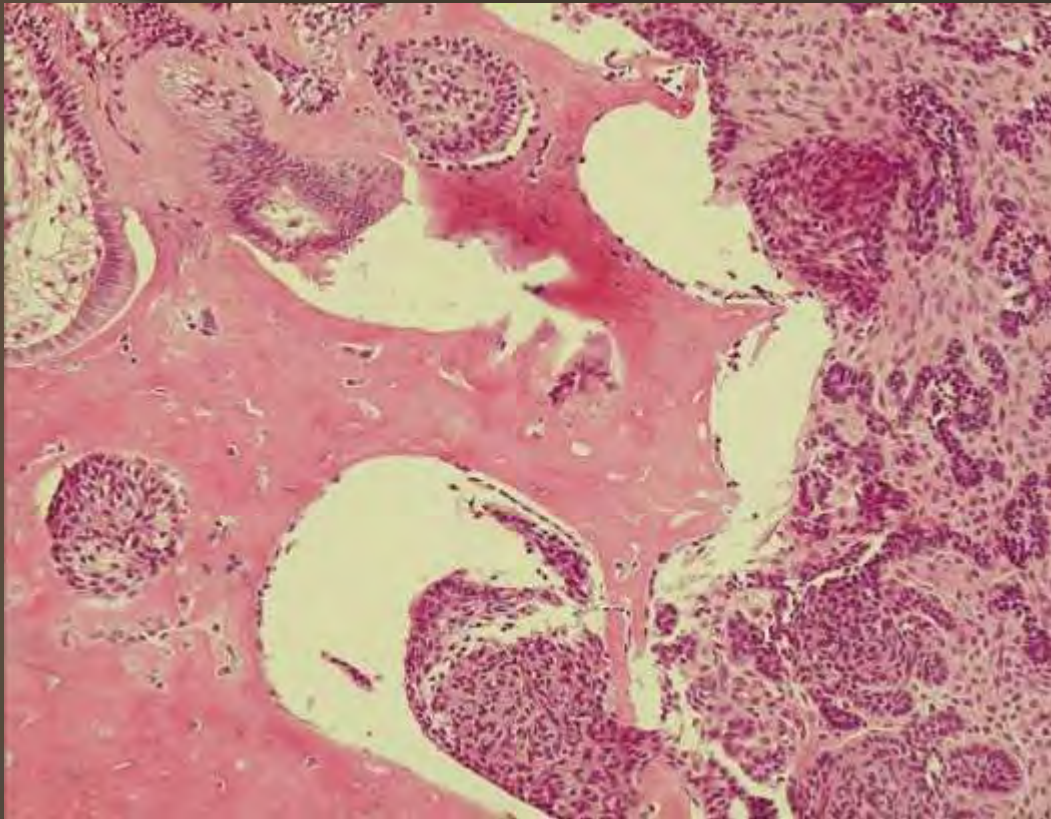
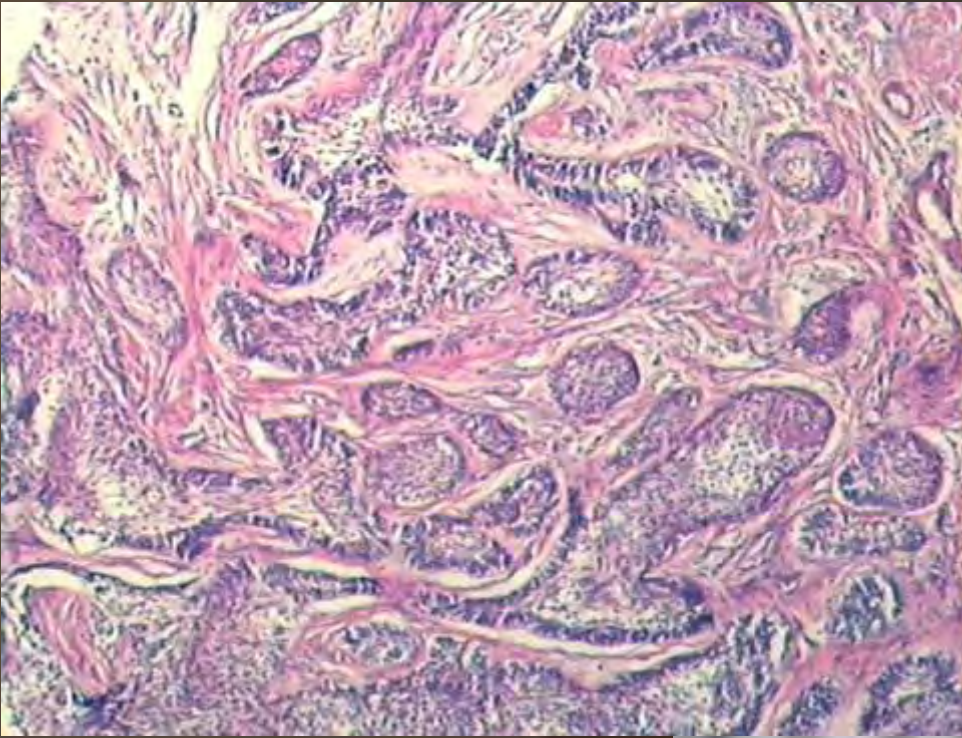


Slide No 1



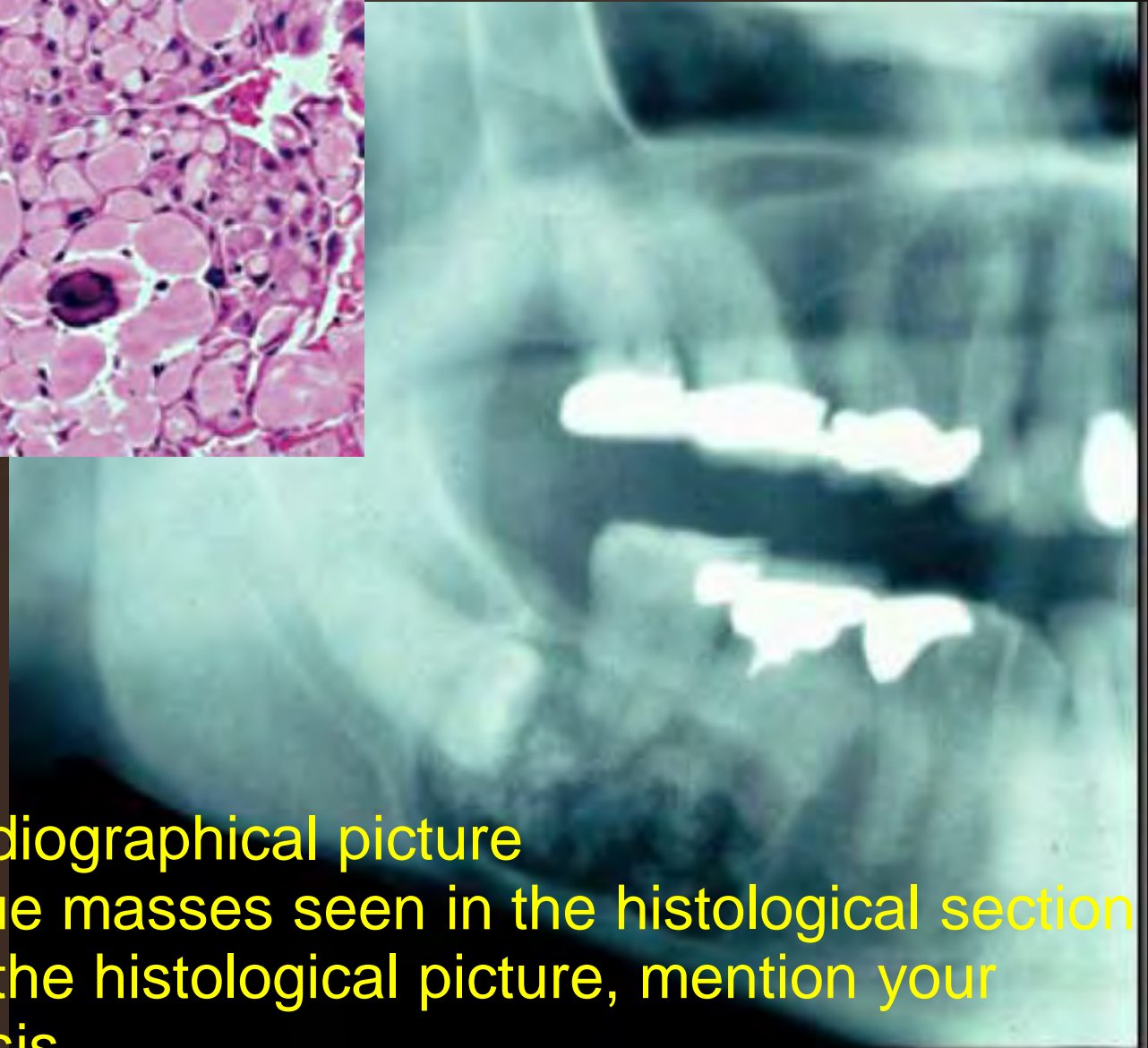
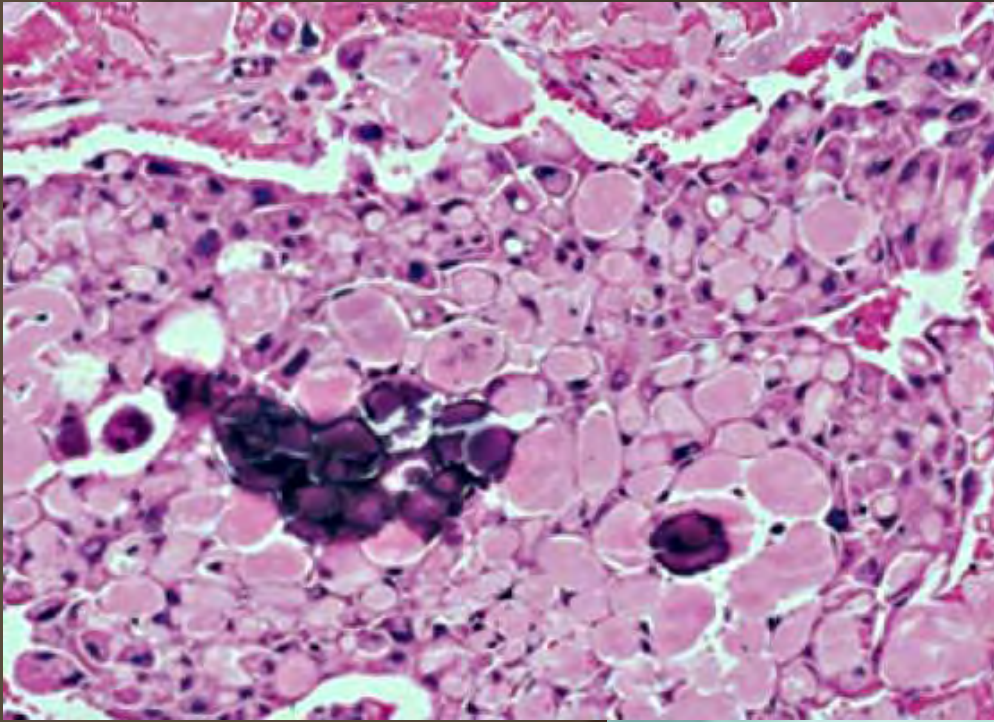
1. Describe this radiographical picture
2. On the basis of the histological picture, mention your possible diagnosis

Slide No 2



1. Describe this radiographical picture
2. On the basis of the histological picture, mention your possible diagnosis

Slide No 3



1. Describe this radiographical picture
2. What are the blue masses seen in the histological section
3. On the basis of the histological picture, mention your possible diagnosis